



U.S. Department  
of Transportation  
**Federal Aviation  
Administration**

Transport Airplane Directorate  
Aircraft Certification Service  
Denver Aircraft Certification Office  
26805 East 68<sup>th</sup> Avenue, Room 214  
Denver, Colorado 80249

September 11, 2013

Sharon Skidmore  
Quality Administrator  
Rosen Sunvisor Systems, LLC  
86365 College View Road  
Eugene, Oregon 97405

Dear Ms. Skidmore:

In response to your letter dated July 7, 2013, we have reviewed your request to add a Short Arm, Cockpit, Sunvisor System to the Master Drawing List (MDL) for Supplemental Type Certificates (STC) SA3597NM, SA3598NM, SA3599NM and SA3650NM. The Short Arm System was developed to accommodate the addition of cockpit air management ducting being added to the center overhead of Beechcraft Corporation model G36 (S/N E-3957, E-3981 and up) and G58 (S/N TH-2310, TH-2340 and up) aircraft. It can also be installed in Beechcraft Corporation model 36, A36, 58 and 58A aircraft. Our review of the data submitted indicates this major change continues to meet the requirements of Part 3 of the Civil Aviation Regulations. The approved MDL RBB-00DL, Revision L, dated August 20, 2013, FAA approved on September 5, 2013, is enclosed.

Also enclosed, in support of this change, please find:

1. STC SA3598NM, issued September 22, 1986 and amended September 6, 2013. The STC was amended to remove data duplicated on its Approved Model List (AML).
2. AML SA3598NM, issued July 25, 2006 and amended September 6, 2013. The AML was amended to update its format.
3. STC SA3599NM, issued September 22, 1986 and amended September 6, 2013. The STC was amended to remove data duplicated on its Approved Model List (AML).
4. AML SA3599NM, issued April 4, 1994 and amended September 6, 2013. The AML was amended to update its format.

Note that STC SA3597NM and SA3650NM were not revised as they do not have AML.

The Instructions for Continued Airworthiness for the Short Arm Sunvisor System, 9100-1162-000, Revision A, dated June 21, 2013, was FAA accepted on August 29, 2013 and is listed in the FAA approved MDL.

In accordance with Title 14 Code of Federal Regulations, 14 CFR Part 21.3, and as a recipient of these amended certificates, you are required to report any failure, malfunction, or defect, except as provided in 14 CFR Part 21.3(d), in any product or part manufactured by you or your contracted suppliers, and which you have determined has resulted or could result in any occurrences listed in 14 CFR Part 21.3(c). The report should be communicated initially by telephone to the Manager, Denver Aircraft Certification Office, at (303) 342-1081, within 24 hours after it has been determined a failure has occurred and followed up with a written notice to the address shown above. FAA form 8010-4, Malfunction or Defect Report or other appropriate format is acceptable in transmitting the required details.

You, as the STC holder, are responsible for any design changes necessary to correct unsafe conditions as well as for submitting those design changes to this office for approval. This requirement is contained in 14 CFR 21.99. In addition, you are required to advise this office of any change of address or ownership.

Per 14 CFR Part 21.50 the STC holder must furnish maintenance procedures for continued airworthiness, as applicable to this change in type design, to the operator at the time the aircraft is returned to service. Thereafter, the holder of a design approval must make those instructions available to any other person required by this chapter to comply with any of the terms of those instructions. In addition, changes to the Instructions for Continued Airworthiness must be made available to any person required by this chapter to comply with any of those instructions.

By accepting these certificates, you acknowledge that you have read and understand your responsibilities as an STC holder.

If you plan to manufacture replacement or modification parts for sale in conformance with approved data listed on the Certificate, those parts must be produced under an FAA production approval per 14 CFR 21.9. Although the holder of an STC may apply for a production certificate in accordance with 14 CFR Part 21 Subpart G, for STC parts it is recommended you apply for a Parts Manufacturer Approval (PMA) in accordance with 14 CFR Part 21 Subpart K. Guidance for obtaining PMA for an STC part is included in FAA Order 8110.42. The identification requirements for parts produced under a PMA are in 14 CFR Part 45.15. Your application may be in letter form, with reference to STC SA3598NM and SA3599NM, and should be addressed to the Federal Aviation Administration, Northwest Mountain Region, at the address indicated below:

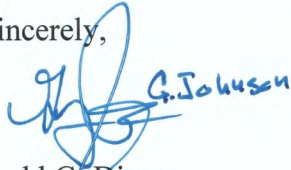
Federal Aviation Administration  
Seattle Manufacturing Inspection District Office, ANM-108S  
1801 Lind Ave. SW  
Renton, WA 98057

Attention: Manager, Seattle Manufacturing Inspection District Office

This effort was accomplished as part of Federal Aviation Administration (FAA) Project Numbers SA5663DE-A and SA5664DE-A which are now closed per this letter. If you have

any questions, please contact Mr. Richard Thomas at (303) 342-1085 or richard.r.thomas@faa.gov.

Sincerely,

A handwritten signature in blue ink, appearing to read "T.G. Dixon". The signature is stylized and written over a light blue rectangular background.

*for* Todd G. Dixon  
Manager, Denver Aircraft Certification Office

5 Enclosures

United States of America  
Department of Transportation - Federal Aviation Administration  
**Supplemental Type Certificate**

*Number* SA3598NM

*This certificate, issued to*

Rosen Sunvisor Systems, LLC  
86365 College View Road  
Eugene, OR 97405

*certifies that the change in the type design for the following product with the limitations and conditions therefor as specified herein meets the airworthiness requirements of Part 3 of the Civil Air Regulations.*

*Original Product—Type Certificate Number:*

See attached FAA Approved Model List (AML), Document No. SA3598NM issued July 25, 2006 or later FAA approved amendments for the list of approved airplane models, applicable installation data requirements and specific limitations.

*Make:*

*Model:*

*Description of the Type Design Change:*

Installation of cockpit sunvisor assemblies in accordance with Rosen Sunvisor Systems, LLC Master Drawing List (MDL) referenced on the attached AML, or later FAA-approved amendments.

*Limitations and Conditions:*

Approval of this change in type design applies to the aircraft models listed on the attached AML. This approval should not be extended to other aircraft of these models on which other previously approved modifications are incorporated unless it is determined that the relationship between this change and any of those other previously approved modifications, including changes in type design, will introduce no adverse effect upon the airworthiness of that aircraft. A copy of this certificate and Rosen Sunvisor Systems, LLC FAA approved MDL must be maintained as part of the permanent records for the modified aircraft.

If the holder agrees to permit another person to use this certificate to alter the product, the holder shall give the other person written evidence of that permission.

*This certificate and the supporting data which is the basis for approval shall remain in effect until surrendered, suspended, revoked, or a termination date is otherwise established by the Administrator of the Federal Aviation Administration.*

*Date of application:* August 25, 1986

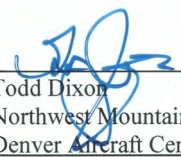
*Date reissued:* March 24, 2003

*Date of issuance:* September 22, 1986

*Date amended:* March 24, 2003; July 7, 2004;  
July 25, 2006; November 21, 2006;  
September 6, 2013



*By direction of the Administrator*

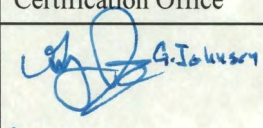
*TDD*  G. Johnson  
(Signature)  
Northwest Mountain Regional Manager  
Denver Aircraft Certification Office  
(Title)

**Any alteration of this certificate is punishable by a fine of not exceeding \$1,000, or imprisonment not exceeding 3 years, or both.**

United States of America  
 Department of Transportation - Federal Aviation Administration  
 Approved Model List (AML)

**FOR**  
**SUNVISOR ASSEMBLY PART NUMBERS 1160004, 1160005 and 1162000**  
**ROSEN SUNVISOR SYSTEMS, LLC**  
**STC SA3598NM**

**1. AML Revision Log**

Date	Pages	Description	FAA Approval
July 25, 2006	ALL	Initial Release	Victor Wicklund Manager, Seattle Aircraft Certification Office
September 6, 2013	ALL	1. Added new sections: AML Revision Log, Introduction and Certification Basis. 2. Reformatted section 4 Approved Model List 3. Aircraft Make was Raytheon (Beech) "Bonanza"	 Podd Dixon Manager, Denver Aircraft Certification Office

**2. Introduction**

This document is the FAA Approved Model List for STC No. SA3598NM for installing the 1160004, 1160005 or 1162000 Cockpit Sunvisor Assemblies into eligible aircraft.

Revisions to the AML must be coordinated between the STC holder and the responsible ACO, and require FAA approval.

**3. Certification Basis**

Aircraft Make	Aircraft Model	Type Data Sheet	Certification Basis
Beechcraft Corporation "Bonanza / Debonair"	35-33, 35-A33, 35-B33, 35-C33, 35-C33A, E33, E33A, E33C, F33, F33A, F33C, G33, H35, G36, J35, K35, M35, N35, P35, S35, V35, V35A, V35B, 36, A36, A36TC, B36TC	3A15	CAR 3

United States of America  
 Department of Transportation - Federal Aviation Administration  
 Approved Model List (AML)

**FOR**  
**SUNVISOR ASSEMBLY PART NUMBERS 1160004, 1160005 and 1162000**  
**ROSEN SUNVISOR SYSTEMS, LLC**  
**STC SA3598NM**

**4. Approved Model List**

Aircraft Make	Aircraft Model	Required Approved Data and Added Model Specific Limitations	AML Amendment Date
Beechcraft Corporation "Bonanza / Travel Air"	35-33, 35-A33, 35-B33, 35-C33, 35-C33A, E33, E33A, E33C, F33, F33A, F33C, G33, H35, G36, J35, K35, M35, N35, P35, S35, V35, V35A, V35B, 36, A36, A36TC, B36TC	<p><b>Master Drawing List:</b> RBB-00DL, Revision NC, dated August 26, 1986 or later FAA approved revision</p> <p><b>Installation Instructions:</b> Included in Master Drawing List</p> <p><b>Instructions for Continued Airworthiness:</b> Included in Master Drawing List as part of the Installation Instructions.</p> <p><b>Additional Limitations:</b> None</p>	09/06/2013

United States of America  
Department of Transportation - Federal Aviation Administration  
**Supplemental Type Certificate**

*Number* SA3599NM

*This certificate, issued to*

Rosen Sunvisor Systems, LLC  
86365 College View Road  
Eugene, OR 97405

*certifies that the change in the type design for the following product with the limitations and conditions therefor as specified hereon meets the airworthiness requirements of either Part 3 of the Civil Air Regulations or Part 23 Title 14 of the Code of Federal Regulations.*

*Original Product—Type Certificate Number:*

See attached FAA Approved Model List (AML), Document No. SA3599NM issued April 4, 1994 or later FAA approved amendments for the list of approved airplane models, applicable installation data requirements and specific limitations.

*Make:*

*Model:*

*Description of the Type Design Change:*

Installation of cockpit sunvisor assemblies in accordance with Rosen Sunvisor Systems, LLC Master Drawing List (MDL) referenced on the attached AML, or later FAA-approved amendments.

*Limitations and Conditions:*

Approval of this change in type design applies to the aircraft models listed on the attached AML. This approval should not be extended to other aircraft of these models on which other previously approved modifications are incorporated unless it is determined that the relationship between this change and any of those other previously approved modifications, including changes in type design, will introduce no adverse effect upon the airworthiness of that aircraft. A copy of this certificate and Rosen Sunvisor Systems, LLC FAA approved MDL must be maintained as part of the permanent records for the modified aircraft.

If the holder agrees to permit another person to use this certificate to alter the product, the holder shall give the other person written evidence of that permission.

*This certificate and the supporting data which is the basis for approval shall remain in effect until surrendered, suspended, revoked, or a termination date is otherwise established by the Administrator of the Federal Aviation Administration.*

*Date of application:* May 1, 1986

*Date reissued:* March 24, 2003

*Date of issuance:* July 11, 1986

*Date amended:* April 8, 1994; March 24, 2003;  
July 7, 2004; March 3, 2008;  
September 6, 2013



*By direction of the Administrator*

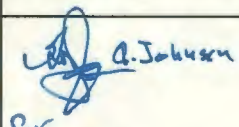
*Todd Dixon*  
Todd Dixon (Signature)  
Northwest Mountain Regional Manager  
Denver Aircraft Certification Office

(Title)

**Any alteration of this certificate is punishable by a fine of not exceeding \$1,000, or imprisonment not exceeding 3 years, or both.**

United States of America  
 Department of Transportation - Federal Aviation Administration  
 Approved Model List (AML)  
 FOR  
 SUNVISOR ASSEMBLY PART NUMBERS 1160004, 1160005 and 1162000  
 ROSEN SUNVISOR SYSTEMS, LLC  
 STC SA3599NM

**1. AML Revision Log**

Date	Pages	Description	FAA Approval
April 4, 1994	ALL	Initial Release	Dan Bui Acting Manager, Seattle Aircraft Certification Office
March 24, 2003	ALL	Added AML amendment date 03/24/03 to correspond with STC amended same date. No other changes.	Richard Simonson Acting Manager, Seattle Aircraft Certification Office
July 7, 2004	ALL	<ol style="list-style-type: none"> <li>1. Aircraft Make was Beech Baron</li> <li>2. Removed Baron Model 3A16</li> <li>3. Baron Models 58P, 58PA, 58TC, 58TCA Certification Basis was CAR 3</li> <li>4. Added Baron Models 95-55, 95-A55, 95-B55, 95-B55A, 95-B55B (T-42A), 95-C55, 95-C55A, D55, D55A, E55, E55A, 56TC, A56TC, 58, 58A</li> <li>5 Added Travel Air Models B95A, D95A, E95, 95, B95</li> </ol>	James Rehr Acting Manager, Seattle Aircraft Certification Office
March 3, 2008	ALL	<ol style="list-style-type: none"> <li>1. Added Baron Model G58</li> <li>2. MDL Revision/date was NC/August 26, 1986</li> </ol>	Donald Eiford for Acting Manager, Seattle Aircraft Certification Office
September 6, 2013	ALL	<ol style="list-style-type: none"> <li>1. Added new sections: AML Revision Log, Introduction and Certification Basis.</li> <li>2. Reformatted section 4 Approved Model List</li> <li>3. Aircraft Make was Raytheon (Beech)</li> </ol>	 Todd Dixon Manager, Denver Aircraft Certification Office

**2. Introduction**

This document is the FAA Approved Model List for STC No. SA3599NM for installing the 1160004, 1160005 or 1162000 Cockpit Sunvisor Assemblies into eligible aircraft.

Revisions to the AML must be coordinated between the STC holder and the responsible ACO, and require FAA approval.



United States of America  
 Department of Transportation - Federal Aviation Administration  
 Approved Model List (AML)

**FOR**  
**SUNVISOR ASSEMBLY PART NUMBERS 1160004, 1160005 and 1162000**  
**ROSEN SUNVISOR SYSTEMS, LLC**  
**STC SA3599NM**

**3. Certification Basis**

Aircraft Make	Aircraft Model	Type Data Sheet	Certification Basis
BEECH "Baron"	58P, 58PA, 58TC, 58TCA	A23CE	14 CFR 23
Beechcraft Corporation "Baron"	95-55, 95-A55, 95-B55, 95-B55A, 95-B55B (T-42A), 95-C55, 95-C55A, D55, D55A, E55, E55A, 56TC, A56TC, 58, 58A, G58	3A16	CAR 3
Beechcraft Corporation "Travel Air"	B95A, D95A, E95, 95, B95	3A16	CAR 3

**4. Approved Model List**

Aircraft Make	Aircraft Model	Required Approved Data and Added Model Specific Limitations	AML Amendment Date
BEECH "Baron"	58P, 58PA, 58TC, 58TCA	<p><b>Master Drawing List:</b> RBB-00DL, Revision E, dated January 16, 2008 or later FAA approved revision</p> <p><b>Installation Instructions:</b> Included in Master Drawing List</p> <p><b>Instructions for Continued Airworthiness:</b> Included in Master Drawing List as part of the Installation Instructions.</p> <p><b>Additional Limitations:</b> None</p>	03/24/03 07/07/04 03/03/08 09/06/13

United States of America  
 Department of Transportation - Federal Aviation Administration  
 Approved Model List (AML)

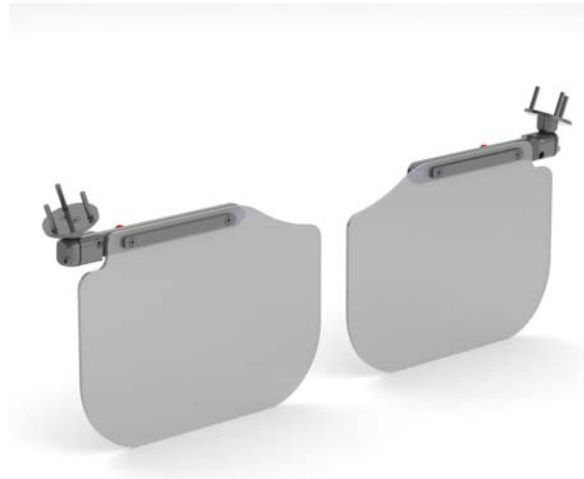
**FOR**  
**SUNVISOR ASSEMBLY PART NUMBERS 1160004, 1160005 and 1162000**  
**ROSEN SUNVISOR SYSTEMS, LLC**  
**STC SA3599NM**

Aircraft Make	Aircraft Model	Required Approved Data and Added Model Specific Limitations	AML Amendment Date
Beechcraft Corporation "Baron"	95-55, 95-A55, 95-B55, 95-B55A, 95-B55B (T-42A), 95-C55, 95-C55A, D55, D55A, E55, E55A, 56TC, A56TC, 58, 58A, G58	<p><b>Master Drawing List:</b> RBB-00DL, Revision E, dated January 16, 2008 or later FAA approved revision</p> <p><b>Installation Instructions:</b> Included in Master Drawing List</p> <p><b>Instructions for Continued Airworthiness:</b> Included in Master Drawing List as part of the Installation Instructions.</p> <p><b>Additional Limitations:</b> None</p>	07/07/04 03/03/08 09/06/13
Beechcraft Corporation "Travel Air"	B95A, D95A, E95, 95, B95	<p><b>Master Drawing List:</b> RBB-00DL, Revision E, dated January 16, 2008 or later FAA approved revision</p> <p><b>Installation Instructions:</b> Included in Master Drawing List</p> <p><b>Instructions for Continued Airworthiness:</b> Included in Master Drawing List as part of the Installation Instructions.</p> <p><b>Additional Limitations:</b> None</p>	07/07/04 03/03/08 09/06/13



***Bonanza 36, A36, and G36 (SN E-3957, E-3981 and up)  
Bonanza 58, 58A, and G58 (SN TH-2310, TH-2340 and up)***

***Rosen Kit Number R1162000***



**Component Maintenance Manual  
with Installation Instructions,  
Instructions for Continued Airworthiness  
and Illustrated Parts List**

**Manual Number  
Rosen 9100-1162-000  
Revision A**

Rosen Sunvisor Systems LLC  
86365 College View Road  
Eugene, Oregon 97405 USA

**Rosen Sunvisor Systems CMM/ICA/IPC for Sunvisor Assembly (p/n R1162000)**

The ICA on Page 10 must be followed when the R1162000 Sunvisor system is installed in accordance with Supplemental Type Certificate, (STC) No. SA3598NM, amended \_\_\_\_\_ and its Approved Model List(AML), revised \_\_\_\_\_, and SA3599NM amended \_\_\_\_\_ and its AML revised \_\_\_\_\_, or later FAA approved amendments or revisions.

The information contained in this document supplements or supersedes the basic manual only in those areas listed herein. For limitations, procedures, and performance information not contained in this manual, consult the basic aircraft ICA or Maintenance Manual.

**STATEMENT OF Rev A CERTIFICATION**

This manual complies with Federal Aviation Association (FAA) Airworthiness Requirements Part 23.

FAA Acceptance: \_\_\_\_\_ Date: \_\_\_\_\_.

The above certification does not apply to revisions or amendments made after the date of initial certification by other Approved Organizations. Revisions or amendments made by other Approved Organizations must be separately certified and recorded on separate record sheets

**Rosen Sunvisor Systems CMM/ICA/IPC for Sunvisor Assembly (p/n  
R1162000)**

**Record of Revisions**

Rev	Description	Date	Approved
A	Initial Release	6/21/13	GH

**Table of Contents**

Introduction	4
General	4
Revision Service	4
Fault Isolation	5
Product Description	6
Installation Instructions	7
Removal	7
Weight and Balance	8
System Images	9
Repair	9
Instructions for Continues Airworthiness	10
Airworthiness Limitations	10
System Images	11
Parts List	12

**Rosen Sunvisor Systems CMM/ICA/IPC for Sunvisor Assembly (p/n  
R1162000)**

**Introduction**

**1. General**

- a. This Rosen Component Maintenance Manual provides use, maintenance and supplemental airworthiness instructions for the cockpit short arm sunvisor system used on the Beech Bonanza Models 36, A36, G36 SN E-3957, E-3981 and up; and Models 58, 58A, G58 SN TH-2310, TH-2340 and up.
- b. Rosen reserves the right to revise this document for changed procedures, improved parts or changes to the system or components.
- c. All technical support, spare sales, repairs or modifications are to be directed directly to Rosen Sunvisor Systems LLC. RSS must be contacted for future revision of this document as it is possible this does not contain the latest revisions.

**2. Revision Service**

Current revision status and revisions to this document may be obtained from Rosen Sunvisor Systems' website: [www.rosenvisor.com](http://www.rosenvisor.com). We recommend that you periodically check to make sure you are using the most current version.

**Rosen Sunvisor Systems CMM/ICA/IPC for Sunvisor Assembly (p/n R1162000)**

**Fault Isolation**

**1. General**

- a. This section identifies Probable Causes and Corrections for possible faults.

<b>Problem</b>	<b>Probable Cause</b>	<b>Corrective Action</b>
Visor does not extend on arm	Tension Thumb knob too tight	Loosen knob and slide using knob
Lens does not rotate smoothly on vertical axis	Vertical pivot tension incorrectly set	Re-tension vertical pivot
Lens does not rotate smoothly on horizontal axis	Horizontal pivot tension incorrectly set	Re-tension horizontal pivot

**Rosen Sunvisor Systems CMM/ICA/IPC for Sunvisor Assembly (p/n  
R1162000)**

**Product Description**

**General**

- a. The Rosen Sunvisor System consists of two visor assemblies which have been designed to improve pilot comfort during standard cockpit operations. The visor assemblies are fastened to the airframe in the same mounting positions as the factory installed visors.



# Rosen Sunvisor Systems CMM/ICA/IPC for Sunvisor Assembly (p/n R1162000)

## Installation Instructions

This is an FAA STC'd Installation requiring a log book entry upon completion.

This is an FAA STC installation and requires an Aircraft Maintenance log entry upon completion.

### 1. Visor installation

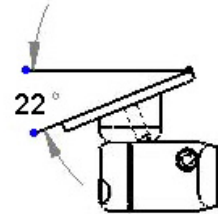
Please read these short instructions **COMPLETELY** before starting.

#### Installation Hardware (included):

Qty: 9/64 Allen Key for #8-32 Cap Screw  
(6) MS24693-C54B #8-32X1 FHP BLK

Installing your Rosen Sunvisor System is easily performed and should take approximately ½ to 1 hour.

- The Rosen NSA Sunvisor for the Beech Bonanza/Baron replaces the original equipment, so the first step is to remove those units from the aircraft with a #2 Phillips screwdriver.
- Using the machine screws provided, install the new Rosen NSA Visor on the pilot's side first. The new visor will use the same mounting points as the old unit. Orientate the mounting plate to find the most vertical position for the swivel. When installed the pivot post should be nearly vertical with respect to the aircraft.



NOTE: Holding the visor so that it covers the front windscreen in front of the pilot, the red thumb tensioning knob should be towards the windscreen.

- After installing the pilot's side, note that the top of the visor should be fairly level. If it is not, the screws on the low side can be snugged to help achieve a level condition. (This should work in 99% of all cases, but washers may be fitted underneath the attachment if necessary).
- Repeat the same procedure for the copilot's side.
- Every movement of the Rosen NSA System is tensionable and is based on the clevis or slide principle and Hex Keys are provided for that purpose. Adjust tension to your preference now. All motions should be smooth, but not loose.
- To stow, the unit can be rotated straight to the overhead while in front, or moved to the side of the aircraft and rotated overhead. While in the forward position the NSA visor stows nicely overhead.
- Place the FAA STC and AML (if appropriate) in the Aircraft Maintenance Log and make an installation entry.

NOTE: Verify that placard information is unobstructed after installation.

## Removal

### 1. Visor Removal

- a. Reverse installation procedure.

**Rosen Sunvisor Systems CMM/ICA/IPC for Sunvisor Assembly (p/n  
R1162000)**

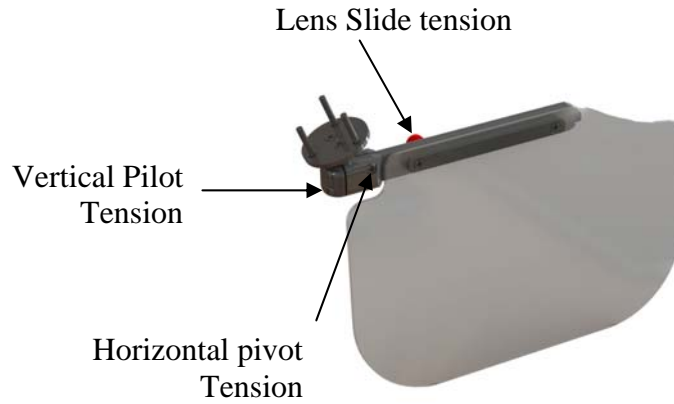
**Weight and Balance**

Because operators calculate Weight and Balance differently the actual station number must be determined by the installer's calculations.

With the visor located in the stow position (in forward position and folded up) this system adds 1.3 lbs. located at the mount point of the visor. When the original visors are removed they must be weighed and removed from the calculation.

Rosen Sunvisor Systems CMM/ICA/IPC for Sunvisor Assembly (p/n R1162000)

**Visor Assembly:**



**Repair**

**General**

- a. All components that do not meet the requirements for continued use must be replaced.

**Rosen Sunvisor Systems CMM/ICA/IPC for Sunvisor Assembly (p/n  
R1162000)**

**Instructions for Continued Airworthiness**

- **(On the ground only)**
  - Periodically clean the lenses with a soft cloth, mild soap and water or Rosen Cleaner, Polisher and Protectant. Do not use abrasives on the lens.
  - Periodically adjust the pivot tensions on the visor assemblies.
  - Periodically clean slide with a non-residue alcohol based cleaner and inspect for wear and damage.

**Airworthiness Limitations**

The Airworthiness Limitations Section is FAA approved and specifies maintenance required under §43.16 and §91.403 of the Federal Aviation Regulations unless an alternative program has been FAA approved.

There are no airworthiness limitations associated with this installation.

Rosen Sunvisor Systems CMM/ICA/IPC for Sunvisor Assembly (p/n R1162000)

Illustrations and IPC

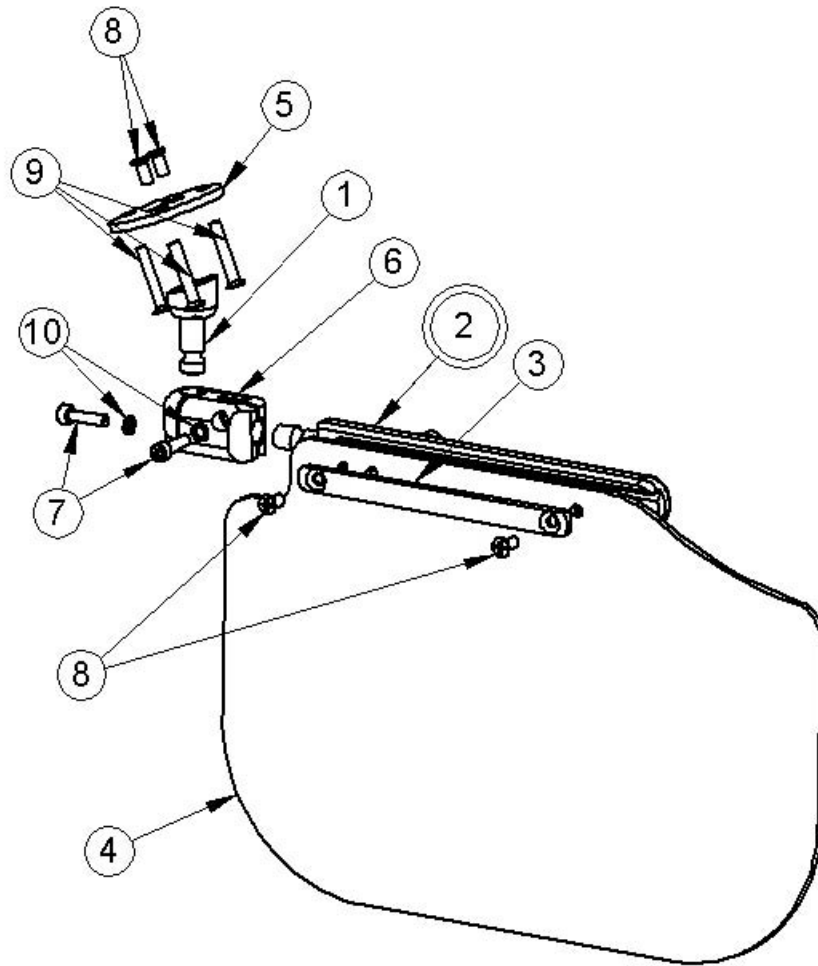


Fig 1

**Rosen Sunvisor Systems CMM/ICA/IPC for Sunvisor Assembly (p/n  
R1162000)**

**Part List**

<b>Fig. No</b>	<b>Fig. Item</b>	<b>Part Number</b>	<b>Description</b>	<b>Reference</b>	<b>Eff</b>	<b>QTY</b>
1	1	1160102-1	Bonanza Style Swivel			1
1	2	1013000	Slide Assembly			1
1	3	1013003	Lens Strip			1
1	4	1160404	Lens			1
1	5	1160101-1	Mounting Plate			1
1	6	1020001	Block, Original			1
1	7	MS16995-27B	SCR #8-32x.625 Hex SHCS SST BLK			2
1	8	*MS24693-C48BP	SCR #8-32x.375 FLH PHIL 100SST BLK P			4
1	9	MS24693-C54B	SCR #8-32x1 FLH PHIL 100 SST BLK			3
1	10	8HCLW	WSHR #8 Lock High Collar			2

\*Torque to full closure plus 1/8 turn when installing.



**Beech Bonanza/Baron/ Duke**  
**NSA Sunvisor System**

Date	Revision	Approved
2/20/24	W	SYS

Drawing List  
**RBB-00DL**

**Doc. #9050-0116-001**

Bon/Bar Std	Bon/Bar 3 <sup>rd</sup> Axis	Duke Std	Duke 3 <sup>rd</sup> Axis	36, A36, G36* 58, 58A, G58**	* S/N E-3957, E-3981 and up ** S/N TH-2310, TH-2340 and up	Replaces	Description	Rev
Kit RBB-300				R1162000			FAA STC SA3597NM, SA3598NM, SA3599NM, SA3650NM	
1	-1A	-2	-2a		Drawing			
1		1	1		1160001	R1160001	Complete Assembly Duke Standard	D
			1		1160002	R1160002	Complete Assembly Duke 3 <sup>rd</sup> Axis	E
					1160004	R1160004	Complete Assembly Bonanza/Baron Standard	D
	1				1160005	R1160005	Complete Assembly Bonanza/Baron 3 <sup>rd</sup> Axis	G
				1	1162000		Complete Assembly, Short Arm	B
2	2	2	2		1010000-5		Complete Slide Assembly	G
					1010001-5		Female Slide	M
					1010002-3		Male Slide	U
2	2	2	2		1010003		NSA Lens Strip	H
				2	1013000		Slide Assembly	A
					1013001		Slide, Female	D
					1013002		Slide, Male	B
				2	1013003		Lens Strip	B
2		2		2	1020001	R1020001	Original Block	R
	2		2		1020100-001		NSA Modified Block Assembly	F
					1020002-001		Modified 'A' Block	P
					1020003-001		Modified 'B' Block	V
2	2			2	1160101-1		Mounting Plate	F
2	2			2	1160102-1		Bonanza Style Swivel	J
		2	2		1160201		Duke Bracket	D
		2	2		1160202		Duke Style Swivel	J

Continued on next page

# Rosen®

## SUNVISOR SYSTEMS

2					1160401-001	Bonanza/Baron Standard Lens (Sales Ref: RBB-200-1)	L
	2				1160401-002	Bonanza/Baron Modified Lens (Sales Ref: RBB-200-1A)	L
		2			1160402-1	Duke Standard Lens (Sales Ref: RBB-200-2)	E
			2		1160402-2	Duke 3 <sup>rd</sup> Axis Lens (Sales Ref: RBB-200-2A)	E
				2	1160404	Lens	B
1	1			1	<b>KITS</b> <b>R1160102-1</b> 1160102-1	<b>Bonanza Style Swivel Kit</b> Bonanza Style Swivel Magnalube	J
1	1	1	1		<b>R1010000-KIT-5</b> 1010000-5	<b>Universal Slide with Lens Strip Kit</b> Complete Slide Assembly	A G
1	1	1	1		1010003	Lens Strip	H
3	3	3	3		MS24693-C48BP	#8-32 X .375 Flat Head Phillips SS Black Patch Screw Magnalube	
1 or 20	1 or 20	1 or 20	1 or 20		<b>2816-KIT</b> 2816-1011-000	<b>Black Knob Kit</b> Knob, 8-32X.5 SHC SS Black	
				1 or 20	<b>99-701-KIT</b> 99-701	<b>Red Knob Kit</b> Knurled Knob 8-32 X .75	
1	1				<b>Lens Kits</b> <b>R1160401-001</b>	<b>Bonanza/Baron Standard Lens</b>	L
1	1				<b>R1160401-002</b>	<b>Bonanza/Baron Modified Lens</b>	L
		1			<b>R1160402-1</b>	<b>Duke Standard Lens</b>	E
			1		<b>R1160402-2</b>	<b>Duke 3<sup>rd</sup> Axis Lens</b>	E
				1	<b>R1160404</b>	<b>Lens</b>	B
1	1	1	1		9100-1160-001	Product Maintenance Manual, Beech Duke Kit RBB-300-2, RBB-300-2A	A
					9100-1160-002	Product Maintenance Manual, Beech Bonanza/Baron Kit RBB-300-1, RBB-300-1A	A
				1	9100-1162-000	Component Maintenance Manual (includes Installation Instructions, ICA, IPC)	A