

Supplemental Type Certificate

Number SA5137NM

This certificate, issued to

**Rosen Sunvisor Systems
86365 College View Road
Eugene, OR 97405**

*certifies that the change in the type design for the following product with the limitations and conditions therefore as specified hereon meets the airworthiness requirements of Part * of the * Regulations.*

Original Product—Type Certificate Number: *See attached FAA Approved Model List (AML)
Make: No. SA5137NM for a list of approved airplane.
Model: models and applicable airworthiness regulations

Description of the Type Design Change: Installation of sun visor in accordance with ROSEN Product Development, Inc. Drawing List No. RCS-300 / 400-00 DL, Revision B, dated February 14, 2005, or later FAA-approved revisions.

Limitations and Conditions: Approval of this change in type design applies to the above aircraft model only and should not be extended to other aircraft of this model on which other previously approved modifications are incorporated unless it is determined that the relationship between this change and any of those other previously approved modifications will introduce no adverse effect upon the airworthiness of that aircraft. A copy of this Certificate and FAA Approved Model List (AML) No. SA5137NM, dated February 22, 2005, or later FAA approved revision, must be maintained as part of the permanent records for the modified aircraft.

If the holder agrees to permit another person to use this certificate to alter the product, the holder shall give the other person written evidence of that permission.

This certificate and the supporting data which is the basis for approval shall remain in effect until surrendered, suspended, revoked, or a termination date is otherwise established by the Administrator of the Federal Aviation Administration.

Date of application: December 17, 1990

Date reissued: February 22, 2005

Date of issuance: May 2, 1991

Date amended: September 5, 2002; June 26, 2003;
February 22, 2005

By direction of the Administrator



Dore M Anderson
(Signature)

Acting Manager, Seattle Aircraft
Certification Office

(Title)


Any alteration of this certificate is punishable by a fine of not exceeding \$1,000, or imprisonment not exceeding 3 years, or both.

This certificate may be transferred in accordance with FAR 21.47.

**FAA APPROVED MODEL LIST (AML) SA5137SE
FOR
INSTALLATION OF ROSEN SUNVISOR SYSTEMS COCKPIT SUN VISOR**

| ITEM | AIRPLANE MAKE | AIRPLANE MODEL | TYPE CERTIFICATE NUMBER | CERTIFICATION BASIS FOR ALTERATION | FAA APPROVED DRAWING LIST | | AML AMENDED DATE |
|------|---------------|--|-------------------------|------------------------------------|---------------------------|-----------------------|------------------|
| | | | | | NUMBER | REVISION NO. AND DATE | |
| 1. | Cessna | T303 | A34CE | 14 CFR part 23 | RCS-300/ 400-00 DL | B 02/14/05 | 2/22/05 |
| 2. | Cessna | 310, 310A, 310B, 310C, 310D, 310E, 310F, 310G, 310H, E310H, 310I, 310J, 310J-1, E310J, 310K, 310L, 310N, 310P, T310P, 310Q, T310Q, 310R, T310R | 3A10 | CAR 3 | RCS-300/ 400-00 DL | B 02/14/05 | 2/22/05 |
| 3. | Cessna | 320, 320-1, 320A, 320B, 320C, 320D, 320E, 320F, 335, 340, 340A | 3A25 | CAR 3 | RCS-300/ 400-00 DL | B 02/14/05 | 2/22/05 |
| 4. | Cessna | 336 | A2CE | CAR 3 | RCS-300/ 400-00 DL | B 02/14/05 | 2/22/05 |
| 5. | Cessna | 401, 401A, 401B, 402, 402A, 402B, 402C, 411, 411A, 414, 414A, 421, 421A, 421B, 421C, 425 | A7CE | CAR 3 | RCS-300/ 400-00 DL | B 02/14/05 | 2/22/05 |
| 6. | Cessna | 404, 406 | A25CE | 14 CFR part 23 | RCS-300/ 400-00 DL | B 02/14/05 | 2/22/05 |
| 7. | Cessna | 441 | A28CE | 14 CFR part 23 | RCS-300/ 400-00 DL | B 02/14/05 | 2/22/05 |

ISSUE DATE: May 2, 1991

FAA APPROVED: 
Acting Manager, Seattle Aircraft
Certification Office

REISSUED: February 22, 2005
AMENDED: September 22, 2003; March 22, 2003; February 22, 2005

SUPPLEMENTAL TYPE CERTIFICATE

10084369

This Certificate/Approval is issued by EASA, acting in accordance with Regulation (EU) 2018/1139 on behalf of the European Union, its Member States and of the European third countries that participate in the activities of EASA under Article 129 of that Regulation and in accordance with Commission Regulation (EU) No. 748/2012 to

ROSEN SUNVISOR SYSTEMS L.L.C.

86365 COLLEGE VIEW ROAD
EUGENE OR 97405
UNITED STATES OF AMERICA

and certifies that the change in the type design for the product listed below with the limitations and conditions specified meets the applicable Type Certification Basis and, if applicable, environmental protection requirements when operated within the conditions and limitations specified below:

Type Certificate Number: (AML) SA5137SE,
DATED 22 FEBRUARY 2005.
FAA APPROVED MODEL LIST

Type Certificate Holder: See FAA AML

Type: See FAA AML

Model: See FAA AML

Original STC Number: FAA STC SA5137NM

Description of Design Change:

Installation of sun visor

EASA Certification Basis:

The Certification Basis for the original product remains applicable to this certificate/approval. The requirements for environmental protection and the associated certified noise and/ or emissions levels of the product are unchanged and remain applicable to this certificate/approval.


Associated Technical Documentation:

ROSEN Product Development, Inc. Drawing List No. RCS-300 /400-00 DL, Revision 8, dated 14 February 2005,

See Continuation Sheet(s)

For the European Union Aviation Safety Agency

Cologne, Germany, 26 April 2024



Marco CAPACCIO
Section Manager

Small Aircraft, Balloons & Airships



or later revisions of the above listed document(s) approved/accepted on behalf of EASA in accordance with the Technical Implementation Procedures of EU/ USA Bilateral Agreement.

Limitations/Conditions:

Prior to installation of this change/repair it must be determined that the interrelationship between this change/repair and any other previously installed change and/ or repair will introduce no adverse effect upon the airworthiness of the product.

- End -



Cessna 300 and 400 Series
Aircraft

| | | |
|---------|----------|----------|
| Date | Revision | Approved |
| 2/20/24 | M | SYS |

Drawing List
FAA STC SA5137NM RCS-300/400-00 DL Doc. # 9050-0118-003

| Drawing | Reference | Description | Rev. |
|---------------------|---------------|--|----------|
| A34CE (Cessna T303) | (RC303-300-1) | | |
| 1182100 | | Complete Assembly | F |
| 1180302 | | Lens | C |
| 1182101 | | Back Plate | A |
| 1182102 | | Mounting Bracket | A |
| 1010000-5 | | Complete Slide Assembly | G |
| 1010001-5 | | Female Slide | M |
| 1010002-3 | | Male Slide | U |
| 1010003 | | Lens Strip | H |
| 1020100-001 | | Assembly, Mod Block NSA | F |
| 1020002-001 | | Mod Block A | P |
| 1020003-001 | | Modified 'B' Block Standard | V |
| 1160102-1 | | Bonanza Style Swivel | J |
| 9051-0118-014 | | Installation Instructions for Cessna 303 Sunvisor System | D |

Continued..

Rosen®

SUNVISOR SYSTEMS

| Drawing | Reference | Description | Rev. |
|--|--------------------------------------|--|----------|
| 3A10, A2CE, A7CE, A25CE, A28CE (Cessna 310-400 Series Aircraft) | (RC300/400- 300-1) (RCS-300-6) | | |
| 1180000-006 | | Complete Assembly | F |
| 1180400-011 | | Assembly, Side, Pilot's | H |
| 1180400-012 | | Assembly, Side, Co-Pilot's | H |
| 1180100-010 | | Mounting Assembly | D |
| 1180109 | | Mounting Bracket | J |
| 1160102-1 | | Bonanza Style Swivel | J |
| 1020100-001 | | Assembly, Mod Block NSA | F |
| 1020002-001 | | Mod Block A | P |
| 1020003-001 | | Modified 'B' Block Standard | V |
| 1010000-5 | | Complete Slide Assembly | G |
| 1010001-5 | | Female Slide | M |
| 1010002-3 | | Male Slide | U |
| 1010003 | | Lens Strip | H |
| 1180301-002 | | Lens | G |
| 9051-0118-015 | | Installation Instructions for Cessna 310-400 Series Sunvisor System | D |

Continued..



| Drawing | Reference | Description | Rev. |
|--------------------------|---------------|---|----------|
| 3A25 (Cessna 320 Series) | (RC320-300-1) | | |
| 1182200 | | Complete Assembly | G |
| 1182201 | | Swivel Stud | A |
| 1182202 | | Angle Washer | A |
| 1020100-001 | | Assembly, Mod Block NSA | F |
| 1020002-001 | | Mod Block A | P |
| 1020003-001 | | Modified 'B' Block Standard | V |
| 1010000-5 | | Complete Slide Assembly | G |
| 1010001-5 | | Female Slide | M |
| 1010002-3 | | Male Slide | U |
| 1010003 | | Lens Strip | H |
| 1160401-002 | | Lens | L |
| 9051-0118-016 | | Installation Instructions for Cessna 320 Series Sunvisor System | E |

Continued..

Rosen®

SUNVISOR SYSTEMS

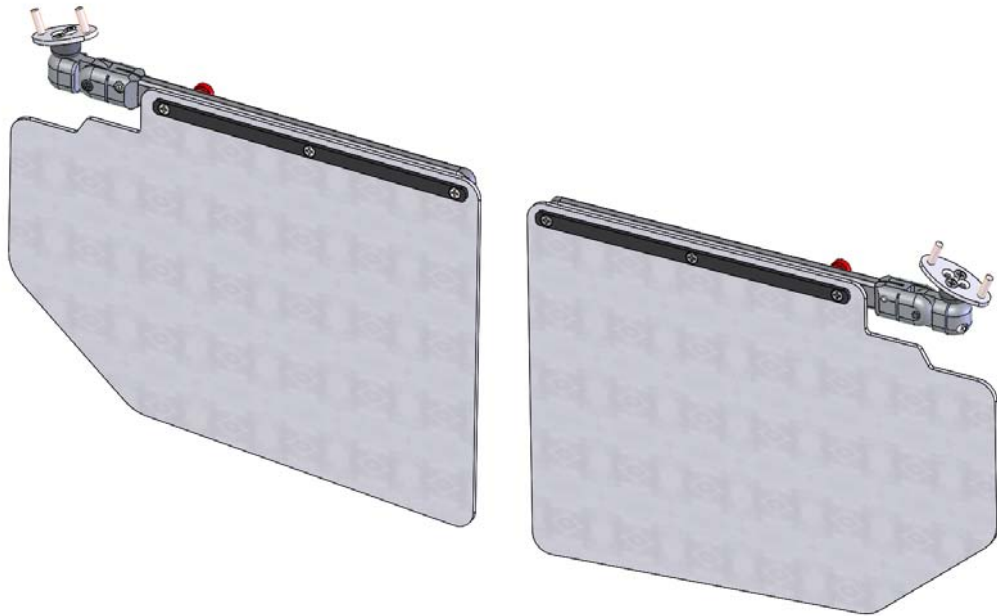
| Drawing | Reference | Description | Rev. | | |
|--|--------------|---|----------------------------------|--|---|
| A7CE (Cessna 414A and 421B only) 1181300 | (R1181300-0) | Complete Assembly | F | | |
| 1181201 | | | | 421B Swivel | C |
| 1020100-001 | | | | Assembly, Mod Block NSA | F |
| 1020002-001 | | | | Mod Block A | P |
| 1020003-001 | | | | Modified 'B' Block Standard | V |
| 1010000-5 | | | | Complete Slide Assembly | G |
| 1010001-5 | | | | Female Slide | M |
| 1010002-3 | | | | Male Slide | U |
| 1010003 | | | | Lens Strip | H |
| 1180301-002 | | | | Lens | G |
| 9051-0118-022 | | | | Installation Instructions for Cessna 414A, 421B Series Sunvisor System | E |
| R1160102-1 1160102-1 | Kits | Bonanza Style Swivel Kit Bonanza Style Swivel Magalube | J | | |
| R1010000-KIT-5 1010000-5 1010003 MS24693-C48BP | | Universal Slide with Lens Strip Kit Complete Slide Assembly Lens Strip #8-32 X .375 Flat Head Phillips SS Black Patch Screw | A G H | | |
| R1181201 1181201 43-SPP | | Cessna 421B Swivel Kit 421B Swivel 7/16 E-clip | C | | |
| R1180302 R1180301-002 R1160401-002 | | T303 Lens Kit 310-400 Series Lens Kit 320 Lens Kit | C G L | | |

**Rosen Sunvisor Systems CMM / IPC for Sunvisor Assembly
(p/n R1180000-006)**



Cessna 310-400 series NSA Sunvisor System

Rosen Kit Number RC300/400-300-1, RCS-300-6



**Component Maintenance Manual
with Illustrated Parts List
and Instructions for Continued Airworthiness**

**Manual Number
Rosen 9051-0118-015
Revision D**

March 31, 2015

Rosen Sunvisor Systems LLC
86365 College View Road
Eugene, Oregon 97405 USA

**Rosen Sunvisor Systems CMM / IPC for Sunvisor Assembly
(p/n R1180000-006)**

This ICA must be followed when the R1180000-006 sunvisor system is installed in accordance with Supplemental Type Certificate, (STC) No. SA5137NM, dated May 2, 1991, amended February 22, 2005.

The information contained in this document supplements or supersedes the basic manual only in those areas listed herein. For limitations, procedures, and performance information not contained in this manual, consult the basic aircraft ICA or Maintenance Manual.

STATEMENT OF Rev D CERTIFICATION

This manual complies with Federal Aviation Association (FAA) Airworthiness Requirements Part 23 _____.

FAA Acceptance: Richard R. Fink Date: 4/29/15
(R1180000-006)

The above certification does not apply to revisions or amendments made after the date of initial certification by other Approved Organizations. Revisions or amendments made by other Approved Organizations must be separately certified and recorded on separate record sheets

**Rosen Sunvisor Systems CMM / IPC for Sunvisor Assembly
(p/n R1180000-006)**

Record of Revisions

| Rev | Description | Date | Approved |
|-----|---|---------|----------|
| D | Update to CMM/IPC format. Correct typos | 3/31/15 | GH |

Table of Contents

| | |
|---|-------------|
| <u>Record of Revisions</u> | <u>3</u> |
| <u>Introduction</u> | <u>4</u> |
| <u>General</u> | <u>4</u> |
| <u>Revision Service</u> | <u>4</u> |
| <u>Fault Isolation</u> | <u>5</u> |
| <u>Product Description</u> | <u>6</u> |
| <u>Installation Instructions</u> | <u>6</u> |
| <u>Removal</u> | <u>7</u> |
| <u>Weight and Balance</u> | <u>7</u> |
| <u>Repair</u> | <u>7</u> |
| <u>Instructions for Continued Airworthiness</u> | <u>8</u> |
| <u>Airworthiness Limitations</u> | <u>8</u> |
| <u>Illustrations</u> | <u>9-11</u> |
| <u>Parts List</u> | <u>12</u> |

**Rosen Sunvisor Systems CMM / IPC for Sunvisor Assembly
(p/n R1180000-006)**

Introduction

1. General

- a. This Rosen Component Maintenance Manual provides use, maintenance and supplemental airworthiness instructions for the cockpit sunvisor system used on the following Cessna aircraft models: 310, 310A, 310B, 310C, 310D, 310E, 310F, 310G, 310H, E310H, 310I, 310J, 310J-1, E310J, 310K, 310L, 310N, 310P, T310P, 310Q, T310Q, 310R, T310R, 335, 340, 340A, 336, 401, 401A, 401B, 402, 402A, 402B, 402C, 411, 411A, 414, 421, 421A, 421C, 425, 404, 406, 441.
- b. Rosen reserves the right to revise this document for changed procedures, improved parts or changes to the system or components.
- c. All technical support, spare sales, repairs or modifications are to be directed directly to Rosen Sunvisor Systems LLC. RSS must be contacted for future revision of this document as it is possible this does not contain the latest revisions.

2. Revision Service

Current revision status and revisions to this document may be obtained from Rosen Sunvisor Systems' website: www.rosenvisor.com. We recommend that you periodically check to make sure you are using the most current version.

**Rosen Sunvisor Systems CMM / IPC for Sunvisor Assembly
(p/n R1180000-006)**

Fault Isolation

1. General

- a. This section identifies Probable Causes and Corrections for possible faults.

| Problem | Probable Cause | Corrective Action |
|--|--|----------------------------------|
| Visor does not extend on arm | Tension Thumb knob too tight | Loosen knob and slide using knob |
| Lens does not rotate smoothly on vertical axis | Vertical pivot tension incorrectly set | Re-tension vertical pivot |
| Lens does not rotate smoothly on horizontal axis | Horizontal pivot tension incorrectly set | Re-tension horizontal pivot |

**Rosen Sunvisor Systems CMM / IPC for Sunvisor Assembly
(p/n R1180000-006)**

Product Description

General

- a. The Rosen Sunvisor System consists of two visor assemblies which have been designed to improve pilot comfort during standard cockpit operations. The visor assemblies are fastened to the airframe in the same mounting positions as the factory installed visors.

Installation Instructions

This is an FAA STC'd installation requiring a log book entry upon completion.

Installation should take approximately 1 hour.

Please read these short instructions **COMPLETELY** before starting.

Tools Required (not included):

Phillips Screwdriver
5/32 Allen Key
9/64 Allen Key

Installation Hardware (included):

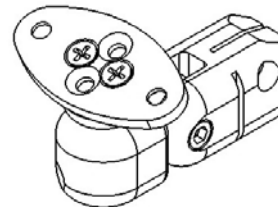
Qty: (4) #10-32 Flat Head Screw



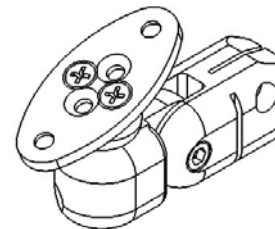
NOTE: On Cessna 310's this system will only fit applications that have the original ball joint style equipment as shown.

- Using a Philips screwdriver, remove (2) stock ball mount visors.

- If your mounting holes are positioned fore and aft in relationship to the centerline of your aircraft, your swivel should look like this when viewed from behind:

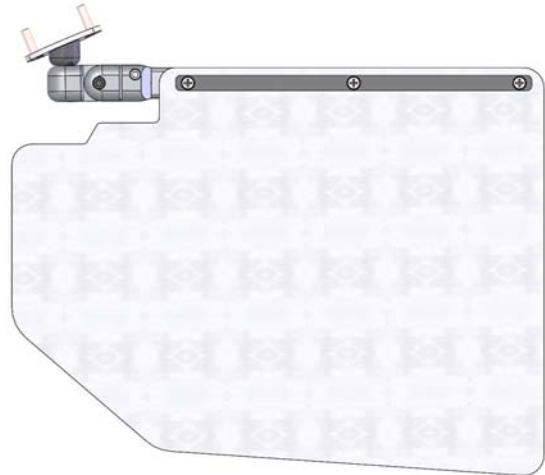


- If your mounting holes are positioned perpendicular to the centerline of your aircraft, your swivel should look like this when viewed from behind:



Rosen Sunvisor Systems CMM / IPC for Sunvisor Assembly (p/n R1180000-006)

- If necessary, reconfigure swivel mount bracket as indicated.
- This image is the pilot's side of a longitudinal configuration.
- Attach your new Rosen sunvisors using the #10-32 Flat Head Screws provided.
NOTE: The red Thumb Screw knob should be forward, away from the operator.
- Repeat for the other side.
- Installation is now complete.
- Visors will stow in different positions, but generally the system will stow overhead when in the forward position.



Removal

- a. Reverse installation procedure.

Weight and Balance

Because operators calculate Weight and Balance differently the actual station number must be determined by the installer's calculations.

With the visor located in forward use position this system adds 2.09 lbs. located at the mount point of the visor. When the original visors are removed they must be weighed and removed from the calculation.

Repair

General

- a. All components that do not meet the requirements for continued use must be replaced.

Rosen Sunvisor Systems CMM / IPC for Sunvisor Assembly
(p/n R1180000-006)

Instructions for Continued Airworthiness

- (On the ground only)
 - Periodically clean the lenses with a soft cloth, mild soap and water or Rosen Cleaner, Polisher and Protectant. Do not use abrasives on the lens.
 - Periodically adjust the pivot tensions on the visor assemblies.
 - Periodically clean slide with a no residue alcohol based cleaner and inspect for wear and damage.

Airworthiness Limitations

The Airworthiness Limitations Section is FAA approved and specifies maintenance required under §43.16 and §91.403 of the Federal Aviation Regulations unless an alternative program has been FAA approved.

There are no airworthiness limitations associated with this installation.

Approved By Robert R. Thomas
ASE, Denver ACO

Date of Approval 9/29/2015

Rosen Sunvisor Systems CMM / IPC for Sunvisor Assembly
(p/n R1180000-006)

Illustrations

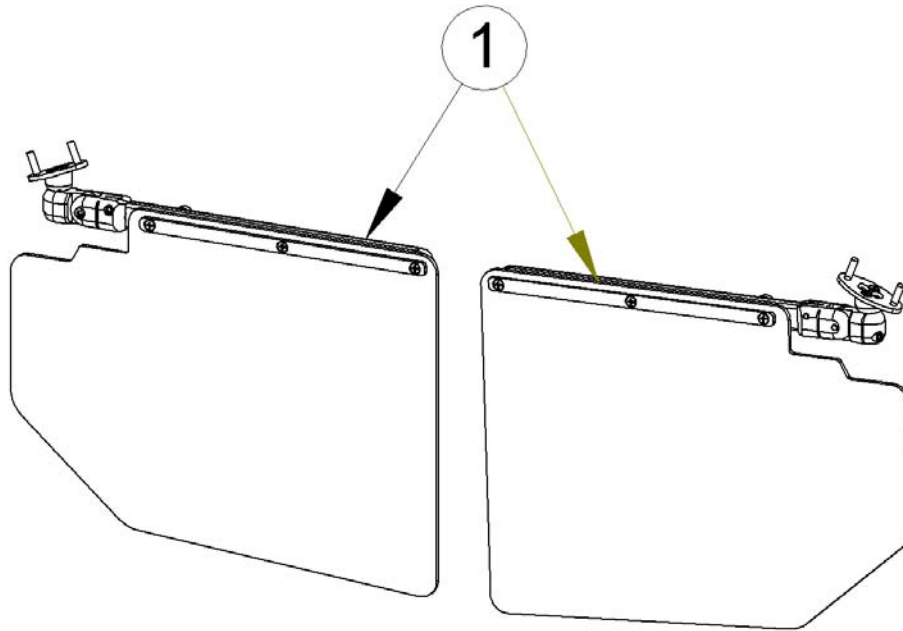


Fig 1

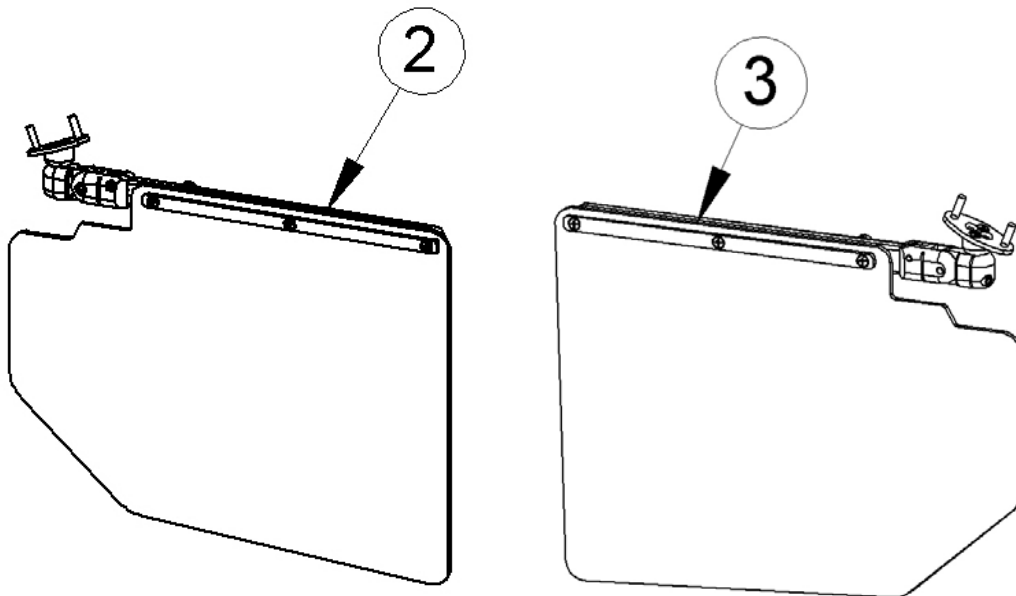


Fig 2

Rosen Sunvisor Systems CMM / IPC for Sunvisor Assembly
(p/n R1180000-006)

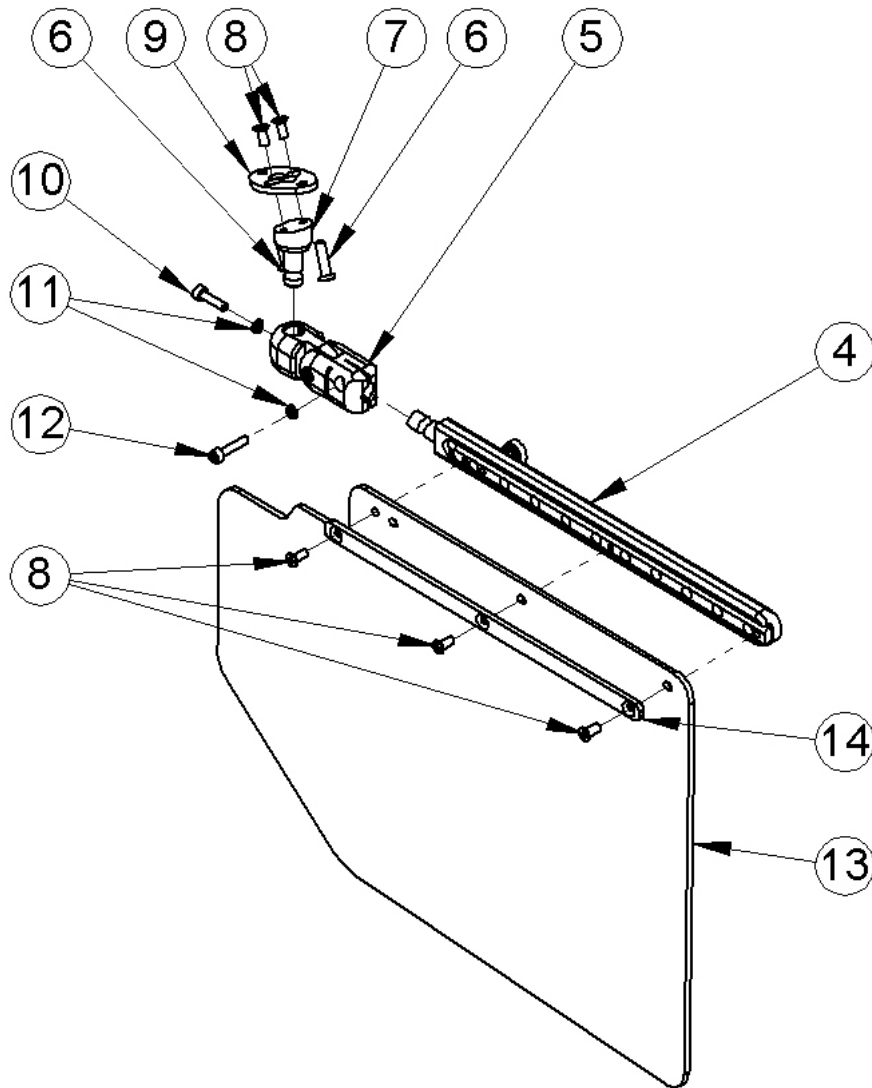


Fig 3

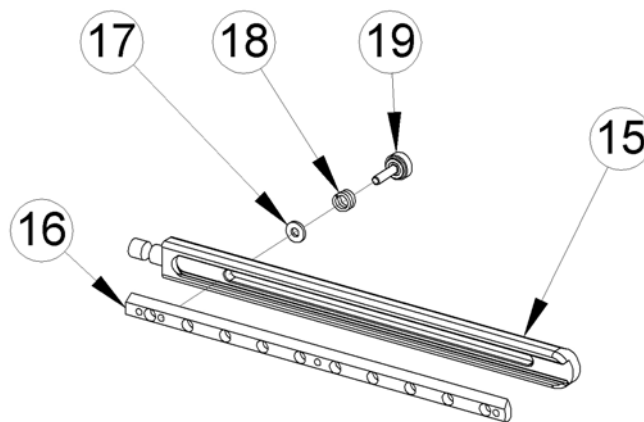


Fig 4

**Rosen Sunvisor Systems CMM / IPC for Sunvisor Assembly
(p/n R1180000-006)**

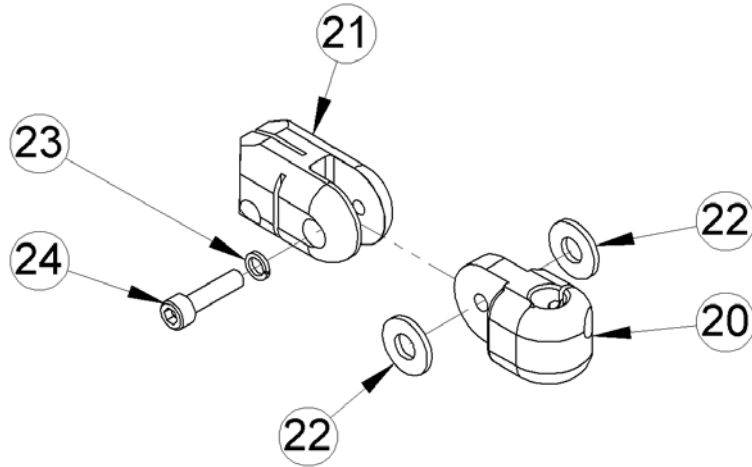


Fig 5

**Rosen Sunvisor Systems CMM / IPC for Sunvisor Assembly
(p/n R1180000-006)**

Part List

| Fig. No | Fig. Item | Part Number | Description | Reference | Eff | QTY |
|----------------|------------------|--------------------|--|--------------------------------|------------|------------|
| 1 | 1 | R1180000-006 | Complete Assembly | RCS-300-6 RC300/400-300-1 | | System |
| 2 | 2 | 1180400-011 | Lens Assembly, Pilot | RCS-300-6P RC300/400-300-1P | | 1 |
| 2 | 3 | 1180400-012 | Lens Assembly, Copilot | RCS-300-6C RC300/400-300-1C | | 1 |
| 3 | 4 | 1010000-5 | Slide Assembly | | | 2 |
| 3 | 5 | 1020100-001 | Assembly, Mod Block NSA | | | 2 |
| 3 | 6 | MS24693-C274B | Srew #10-32 X .75 FLH PHIL 100 SST BLK | | | 4 |
| 3 | 7 | 1160102-1 | Bonanza Style Swivel | | | 2 |
| 3 | 8 | MS24693-C48BP | Screw #8-32 X.375 Phillips Flathead 100 (Black Patch) | | | 10 |
| 3 | 9 | 1180109 | Mounting Bracket | | | 2 |
| 3 | 10 | MS16995-27B | Screw #8-32 X .625 HEX SHCS SST BLK | | | 2 |
| 3 | 11 | 8HCLW | Washer #8 High Collar Lock | | | 4 |
| 3 | 12 | MS16995-28B | Screw #8-32 X .75 HEX SHCS SST BLK | | | 2 |
| 3 | 13 | 1180301-002 | Lens | | | 2 |
| 3 | 14 | 1010003 | Lens Strip | | | 2 |
| 4 | 15 | 1010001-5 | Female Slide-Universal | | | 2 |
| 4 | 16 | 1010002-3 | Male Slide-Universal | | | 2 |
| 4 | 17 | 90295A110 | Nylon Washer .06 X .405 OD- .175 ID | | | 2 |
| 4 | 18 | B-19679 | Compression Spring (Red Knob) | | | 2 |
| 4 | 19 | 99-701 | Ø1/2 Knurled Red Knob 8-32 X 7.5 | | | 2 |
| 5 | 20 | 1020003-001 | Mod Block B | | | 2 |
| 5 | 21 | 1020002-001 | Mod Block A | | | 2 |
| 5 | 22 | 2801-0010 | SS Washer (5710-61-30 Seastrom) | | | 4 |
| 5 | 23 | 10HCLW | Washer #10 High Collar Lock | | | 2 |
| 5 | 24 | MS16996-12B | Screw #10-32 X .75 Hexagon Socket Cap | | | 2 |