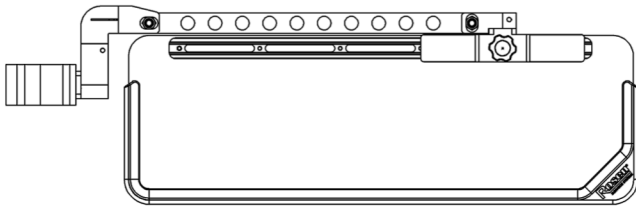


Your Kit Includes

(1) R2330000 Visor Assembly

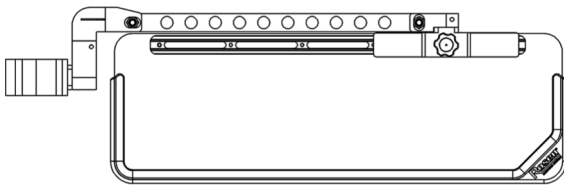


(1) 3/32" Hex key & (1) 1/8" Hex key

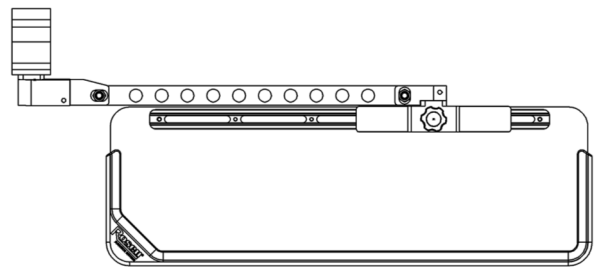
*Product images are for illustration purposes only and may differ from actual product.

Installation Instructions

Step 1 Configure your arm position.

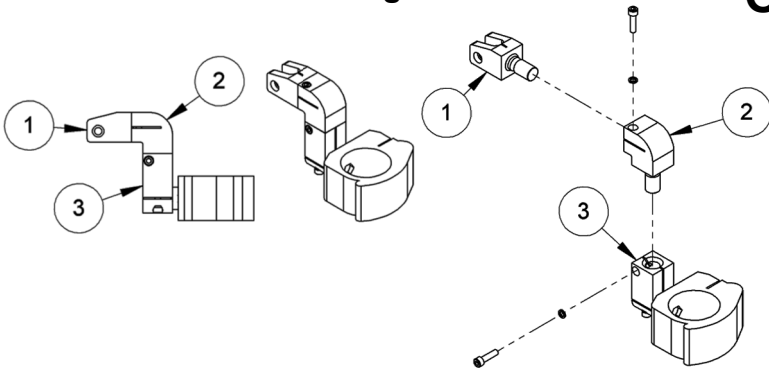


Visor Assembly attaching on vertical / diagonal tube frame.

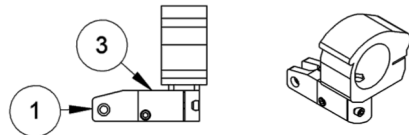


Visor Assembly attaching on horizontal tube frame.

OR

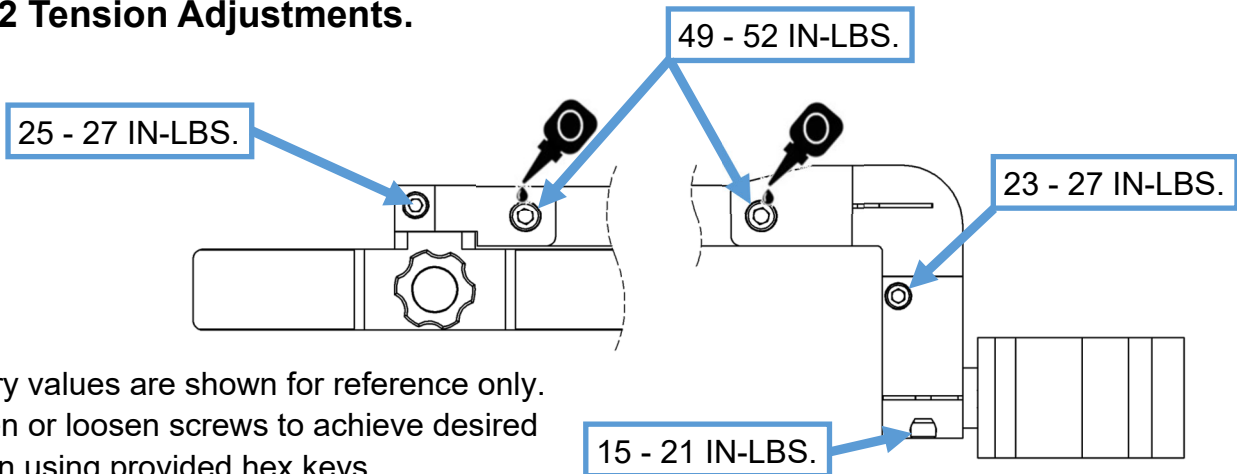


Exploded View for information only



* Remove Item No.2 and attach Item No.3 to Item No.1 to mount visor to a horizontal tube.

Step 2 Tension Adjustments.



Factory values are shown for reference only. Tighten or loosen screws to achieve desired tension using provided hex keys.

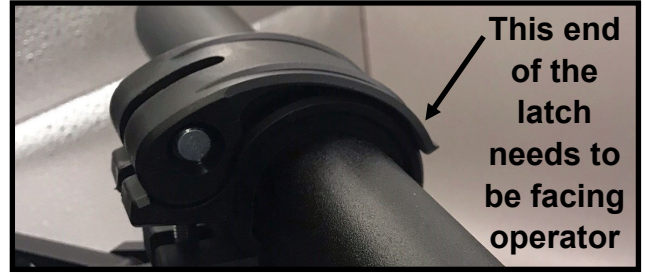
Step 3 Installation:

1.

Before Installing:

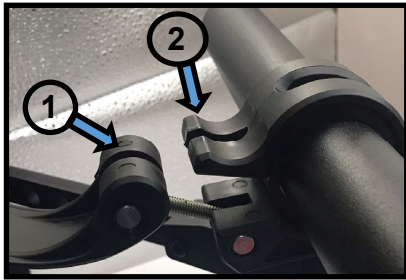
Check fit of clamp on bar. Use rubber insert provided for 1-1/2" bar, remove insert for 1-3/4" bar.

2.



Before installing clamp, make sure the final installed position of the latch shown will face the operator.

3.



Unscrew latch (1) by twisting latch until it is just a little longer than the hook (2).

4.



Next push and rotate the latch over the end of the hook to seat latch in cradled middle area of hook.

5.



Rotate Latch to close. This will secure the rollbar clamp in place.

6.



Roll bar clamp installed.

Step 4 Maintenance:

- Clean lenses with mild soap & water or Rosen Lens Cleaner (PN R9000500).
- Do not use ammonia-based products or abrasives to clean lenses.
- Use a lint free or microfiber cloth.
- Check the tension of the pivot joints periodically and tighten if necessary.
- Periodic lubrication every 6 months with 1-2 drops of WD-40 or comparable lubricant to joints shown in step 2.